



Delivers Visibility To Improve Welding Productivity

Insight Core™



Knowledge Is Power

WHAT IF YOU COULD:



Identify productive welders and those who need more training?



Understand what impacts welding productivity?



Insight Core™

Reports welding productivity from a web-based application to measure and improve your operation.

Measure welding productivity.

See each welder's arc-on time to set baselines, plan improvements and measure goals.

View easy-to-understand reports.

Dashboards show trends and generate reports. Compare welders, cells and plants.

Easily install and use.

Just connect it to the internet. View secure data on any web-connected device anywhere.

Identify welding costs.

Make improvements to reduce expenses.



KNOW YOUR ARC-ON TIME AND DEVELOP OPPORTUNITIES TO IMPROVE

Pinpoint problem areas and understand training needs.

See how much of your operation's arc-on time is within expected threshold ranges, analyzing both machines and welders.

Problems with machines can be resolved, top-performing welders can be rewarded and lesser-performing welders can receive additional training.



● Arc Off - 83.73%
● Arc On - 16.27%



● Within Limits - 83902
● Outside Limits - 16083
● Not Measurable - 0 Welds

Top Producers		
	Device	Arc On %
1	Base Deck 1	48.66
2	Base Deck 2	48.66
3	Wheels	40.53
4	Axle Shafts	38.78
5	Cross Member	33.78

Bottom Producers		
	Device	Arc On %
1	Operator Cab	9.87
2	Tack and Fit Station E	9.23
3	Repair Station 1	7.1
4	Repair Station 2	6.8
5	Rework Finishing	3.0

Top Performers			
	Device	Within Limits	Outside Limits
1	Base Deck 1	15	0
2	Repair Station 1	2564	95
3	Axle Housings	9803	441
4	Rework Finishing	464	22
5	Tack and Fit Station D	15083	924

Bottom Performers			
	Device	Within Limits	Outside Limits
1	Boom Arm	2723	1201
2	Tack and Fit Station A	1795	941
3	Hydraulic Mounts	2940	1610
4	Shovel and Claw	1937	1393
5	Base Deck 2	0	15

VIEW EASY-TO-UNDERSTAND DASHBOARDS AND REPORTS

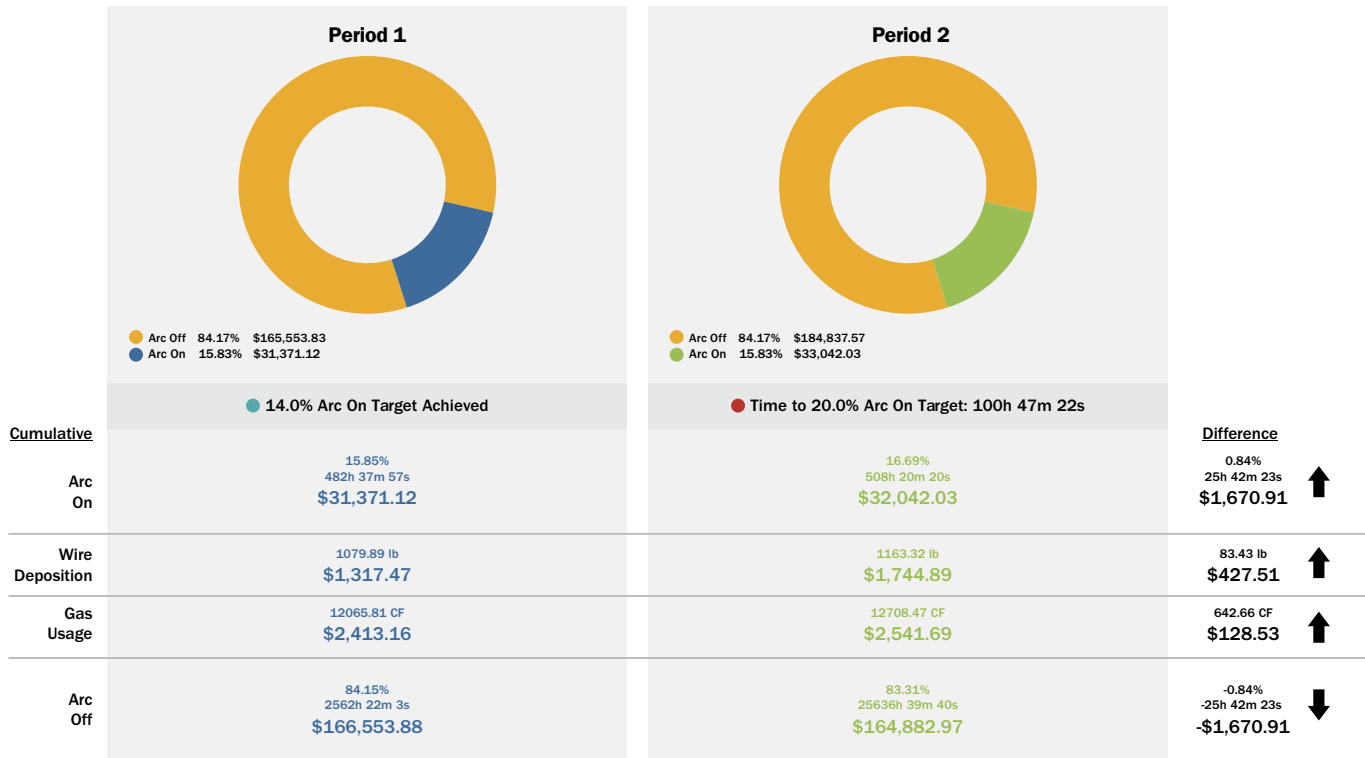
Quickly and easily compare and analyze productivity by machine, welder and shift to find inconsistencies.



UNDERSTAND YOUR TRUE WELDING COSTS

What if you could see that a 10% arc-on time cost you \$20,000 — but the remaining arc-off time cost you \$180,000? Insight Core’s Data to Dollars analysis can help you control business costs and the nonwelding-related activities that cause downtime.

DATA TO DOLLARS



The cost of non-welding time has decreased by \$1,670.91.

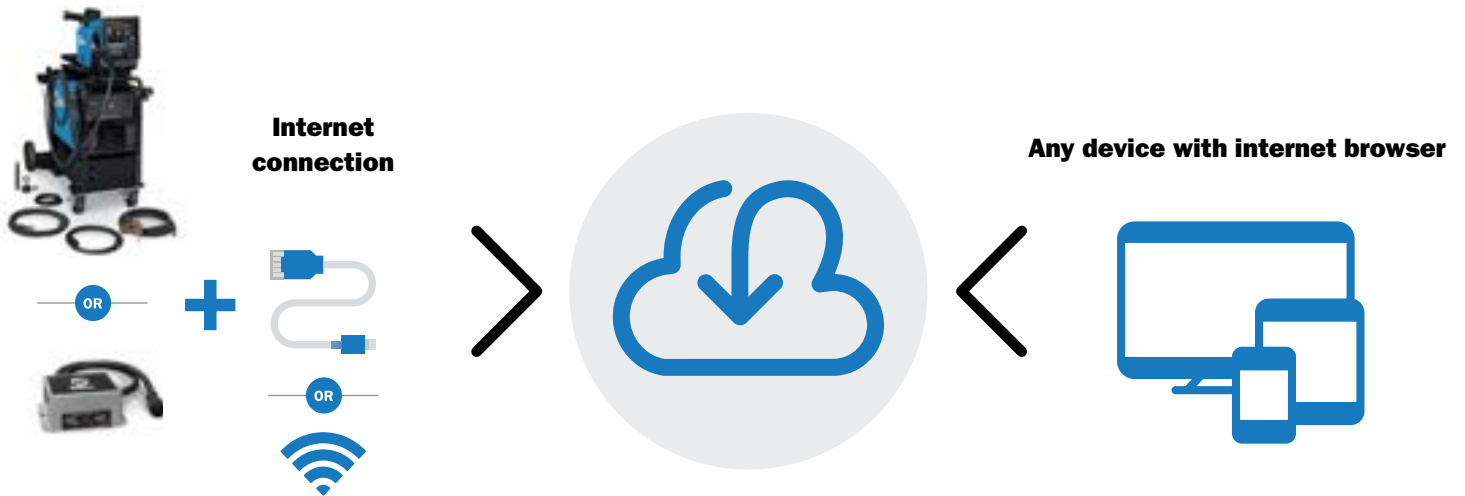
Trace displays weld parameter verification.

Gain deeper insights into each weld collected by viewing welding trace and process data.



HOW IT WORKS

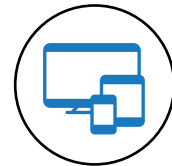
Of all weld data systems in the market, Insight Core is the easiest to install and has the greatest compatibility!



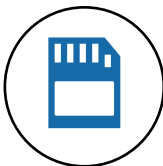
**Uses standard web browsers;
no software or applications
to install or maintain**



**USB setup support for quick
installation, easy data transfer
and fast firmware updates**



**Secure data viewable on any
web-enabled device utilizing
user authentication**



**Onboard memory when
internet connections
go down**



**No mandatory
subscription fees**



**Operator ID feature
enables all reporting to
be tracked by welder**

OPTIONS FOR ANY WELD SHOP

Whether your equipment fleet is old or new, consists of Miller® machines or has mixed brands, there's an Insight Core solution that can work for you.

INSIGHT CORE™ CAPABILITIES

		Power Source Operation Status	Volts	Amps	Arc-On Time	Arc-On %	Quality Threshold Evaluation	Goal Setting	Wire-Feed Speed (in/min, m/min)	Deposition (lb, kg)	Deposition Rate (lb/hr, kg/hr)	Power Source Error Indication							
14-Pin Insight Core Module Required	MIG	Deltaweld® 302/452/652 Deltaweld® CE 402/602/852	<div style="text-align: center;"> <p>Standard Features on</p> <h1>ALL</h1> <p>Insight Core™ Products</p> </div>									<p>Additional Features When Using MPA Feeder</p>							
		Invision™ MPa 350/352/450 Invision™ 354MP/456MP/456P																	
		AlumaPower™ MPa 350/450																	
	MULTI-PROCESS	Dimension™ 302/452/650/652/1000 Dimension™ NT 450/500/450 ArcReach® Dimension™ CE 562/812																	
		XMT® CC/CV 304/350/425/450/456 XMT® MPa 350/450 <i>Note: Not compatible with XMT VS models</i>																	
STICK	Gold Star® 302/452/652 Gold Star® CE 402/602/852																		
SUBMERGED ARC	SubArc DC 650/800/1000/1250 Digital ¹ SubArc AC/DC Digital ¹ 1000/1250 SubArc DC ² 650/800/1000/1250 SubArc AC/DC ² 1000/1250 Summit Arc™ ² 1000/1250																		
	ADVANCED PROCESS	Deltaweld® 350/500 ³														•	•	•	•
		Continuum™ 350/500														•	•	•	•
		Auto-Continuum™ 350/500														•	•	•	•

¹ The SubArc Digital Series requires Insight Core to SubArc Digital Series Adapter Kit **301295** to operate on Insight Core system with a SubArc Interface Digital or Analog Control (BLACK case).

² The SubArc Series requires a 115 VAC to Legacy 14-Pin Accessories Adapter Cord **301259** to operate on Insight Core system with an HDC Automatic Weld Control (BLUE case). Non-SubArc 115 VAC wire feeders are not compatible with the 14-Pin Core Module. The SubArc Series is able to run Insight Core by using 115 VAC to Legacy 14-Pin Accessories Adapter Cord **301259**. Please contact your Miller sales representative if you have questions or need assistance in selecting the proper adapter for your Submerged Arc power source.

³ When using a 14-pin wire feeder with the Deltaweld 350 or 500, wire feed speed, deposition and deposition rate are not available.



Contact us today.

insight@millerwelds.com

MillerWelds.com/insight

#266011 © 2023 Miller Electric Mfg. LLC

Miller, the Miller logo, ArcReach, Deltaweld, Gold Star, The Power of Blue and XMT are registered trademarks of Illinois Tool Works, Inc.
AlumaPower, Auto-Continuum, Continuum, Dimension, Insight Core and Invision are trademarks of Illinois Tool Works, Inc.





Ensure Consistent Weld Quality

Insight Centerpoint™



Knowledge Is Power

YOUR CHALLENGES



Attracting and Retaining Skilled Welders



Finding and Fixing Missed and Bad Welds



Satisfying Customer Demands

YOUR RESPONSES



Attract and Hire More Welders



Provide More Training



Conduct More Inspections



Discount Your Prices More

WHAT IF YOU COULD:



Guide welders step by step through the entire fabrication process?



Understand what impacts weld quality?

Insight Centerpoint™

The real-time welder feedback solution that provides guidance and control within the weld cell.

✓ Reduce training time.

Guide welders through the weld sequence in real time.

✓ Ensure quality welds.

Contain weld defects early and control your weld operation by monitoring every parameter of every weld.

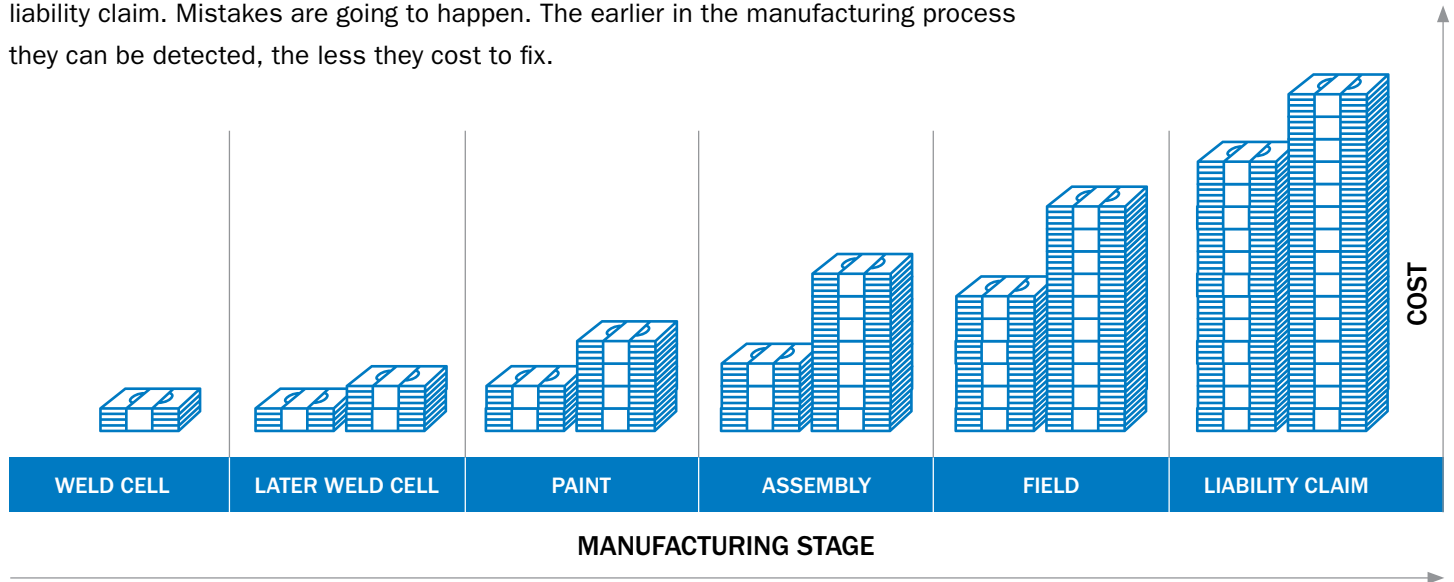
✓ Reduce costs.

Alert welders if a weld is missed or is outside of acceptable parameters, allowing it to be corrected cost-effectively.



STOP LOSING MONEY DUE TO MISSED OR DEFECTIVE WELDS!

The cost of missed or defective welds can be staggering if they result in a field failure or liability claim. Mistakes are going to happen. The earlier in the manufacturing process they can be detected, the less they cost to fix.



WORKFLOW™: GIVE WELDERS CLEAR, COMPLETE GUIDANCE IN FABRICATING.

Gain additional control of your fabrication process with documentation and instructional aids for pre-welding, intra-weld and post-welding activities through embedded videos, images, audio and other file types.



Insight Centerpoint™ provides:



Safety warnings



Reminders



Fixture loading directions



Part packing instructions



Company announcements



PART TRACKING™: GIVE WELDERS COMPLETE CONTROL, FROM THE FIRST WELD TO THE LAST.

Guide welders through the weld sequence in real time using visualizations of the part.
Contain missing and incomplete welds while supporting manual welding best practices.

Identifies acceptable or non-conforming welds

Indicates the current activity status

Tracks all results by welder

The screenshot displays the Miller Insight Centerpoint software interface. At the top, it shows the Miller logo, the system name 'Continuum 2', the date and time 'Jun 25, 2018 12:52:12', and the status 'Normal Operation Since 12:42:14 PM'. The main area features a 3D model of a part with weld points labeled '11' and '13'. A 'Work Instruction Part' is displayed above the model. On the left, a vertical list of thumbnails shows a preview of operational steps, including 'No Welds Load #2', 'No Welds Load #3', 'Welds 1-4 Weld #1', 'Welds Welds Welds Welds 3-4 Side 6', 'Welds Welds Welds Welds 5-6 Side 7', and 'Welds Welds Welds Welds 7-8 Side 8'. On the right, a 'WORKFLOW PLAYLIST' is shown with an 'IN-CYCLE' status. Below this, a table provides performance metrics:

IN-CYCLE	
START	12:50:00 PM
END	
WELDS EXPECTED	17
COMPLETED	11
FALSE ARCS	0
IGNORED	0
EXTRAS	0
CYCLE TIME	02:12.

At the bottom of the interface, there are buttons for 'End Part', 'Ignore', 'Join', and 'Set Activity'. A large digital display shows 'CLAMP TIME 02:12.3 s'.

Shows a preview of operational steps

Moving target guides the welder through proper welding sequence

Allows selection and tracking of non-welding activities

INTEGRATED REPORTS: GET IMMEDIATE ACCESS TO EXTENSIVE INFORMATION.

Review a wide range of information — including preconfigured management charts and reports about weld processes, productivity and business metrics. This information is stored in an SQL server database, which contains welding data from multiple Insight Centerpoint sources.

Part analysis reports

- Part summary
- Parts produced
- Part faults per time
- Faults on a single part
- Weld counts per part
- Parts with missing welds

Productivity reports

- Arc efficiency
- Parts per hour
- Welds per hour
- Downtime analysis
- Cycle time

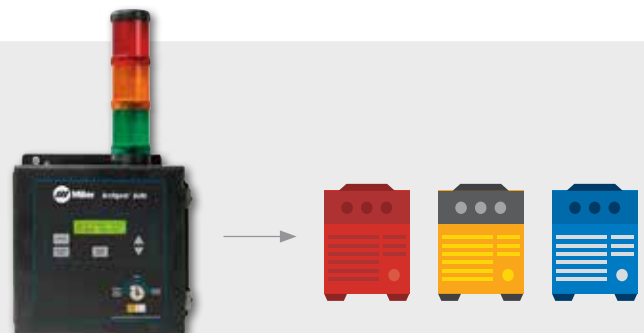
Cost analysis reports

- Cost per weld
- Cost per part
- Wire usage
- Gas usage

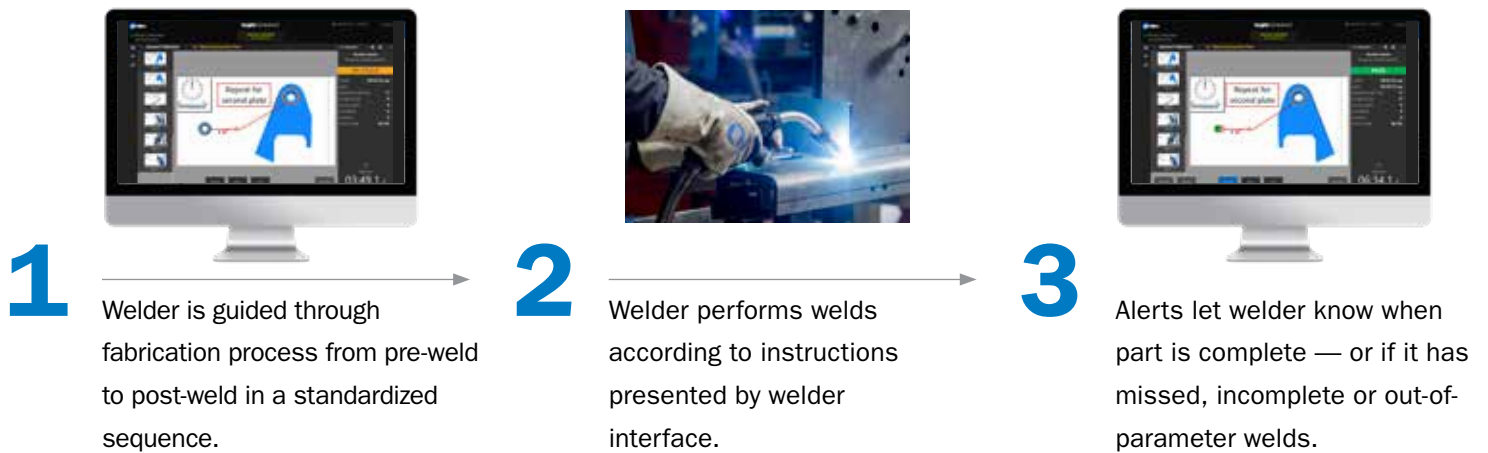


UNIVERSAL BRAND CAPABILITY

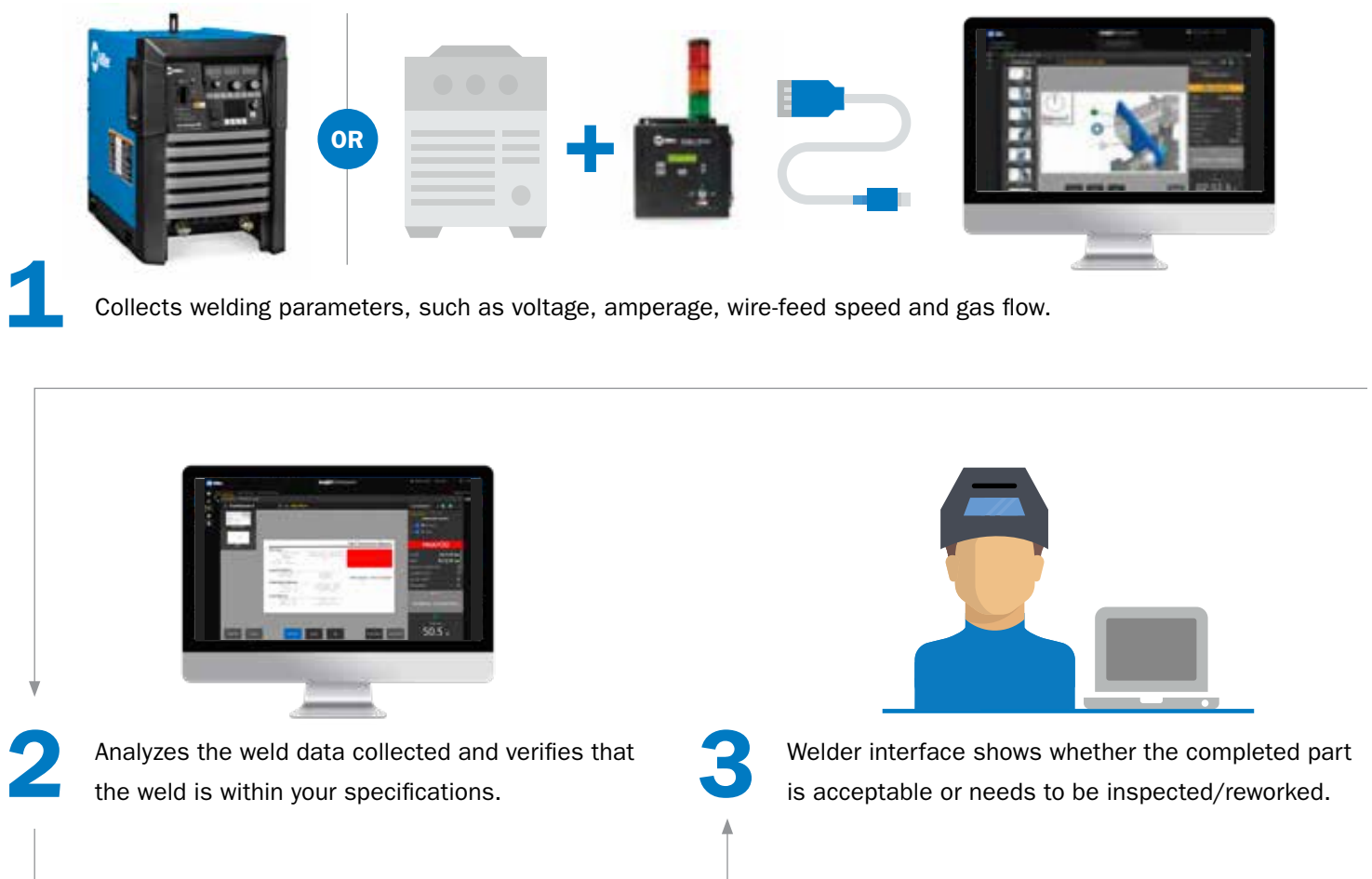
With an ArcAgent™ module, you can have the power of Insight Centerpoint on any machine from any manufacturer, giving you a complete picture of your facility.



HOW IT WORKS — MANUAL WELDING



HOW IT WORKS — FIXED OR FLEXIBLE AUTOMATED WELDING





Contact us today.

insight@millerwelds.com

MillerWelds.com/insight

#247698 © 2021 Miller Electric Mfg. LLC

Miller, the Miller logo and The Power of Blue are registered trademarks of Illinois Tool Works, Inc.
ArcAgent, Insight Centerpoint, Part Tracking and WorkFlow are trademarks of Illinois Tool Works, Inc.

